

# Story of the Smeal Alumni Society



**PennState**  
Smeal College of Business

# Alumni Society Mission Statement

The Smeal College of Business experience extends beyond graduation. The mission of the Alumni Society is to provide opportunities for networking, volunteerism, and lifelong learning to its alumni community of 95,000 graduates. Smeal is more than a leading academic institution; it's an asset for life.



# Membership in the Smeal Alumni Society

By becoming a member of the Penn State Alumni Association, a Smeal alumnus/alumna is automatically considered a member of the Smeal Alumni Society. Both members and non-members are welcome to participate in Society hosted activities, events, and programs.

A percentage of membership dollars from Smeal alumni directly supports alumni activities hosted by the Society. Membership dollars also support University-wide activities and events such as scholarships, student organizations, and Alumni Association events.



# Ways to get Involved

- Join the Alumni Association
- Volunteer on an ASB committee
- Mentor a Smeal student
- Participate in Impact Smeal Day
- Share career advice and insights with current students
- Speak to student organizations
- Join an Affiliate Program Group
- Apply for an At-Large Director position on the ASB
- Hire Smeal students and/or alumni
- Support Smeal financially

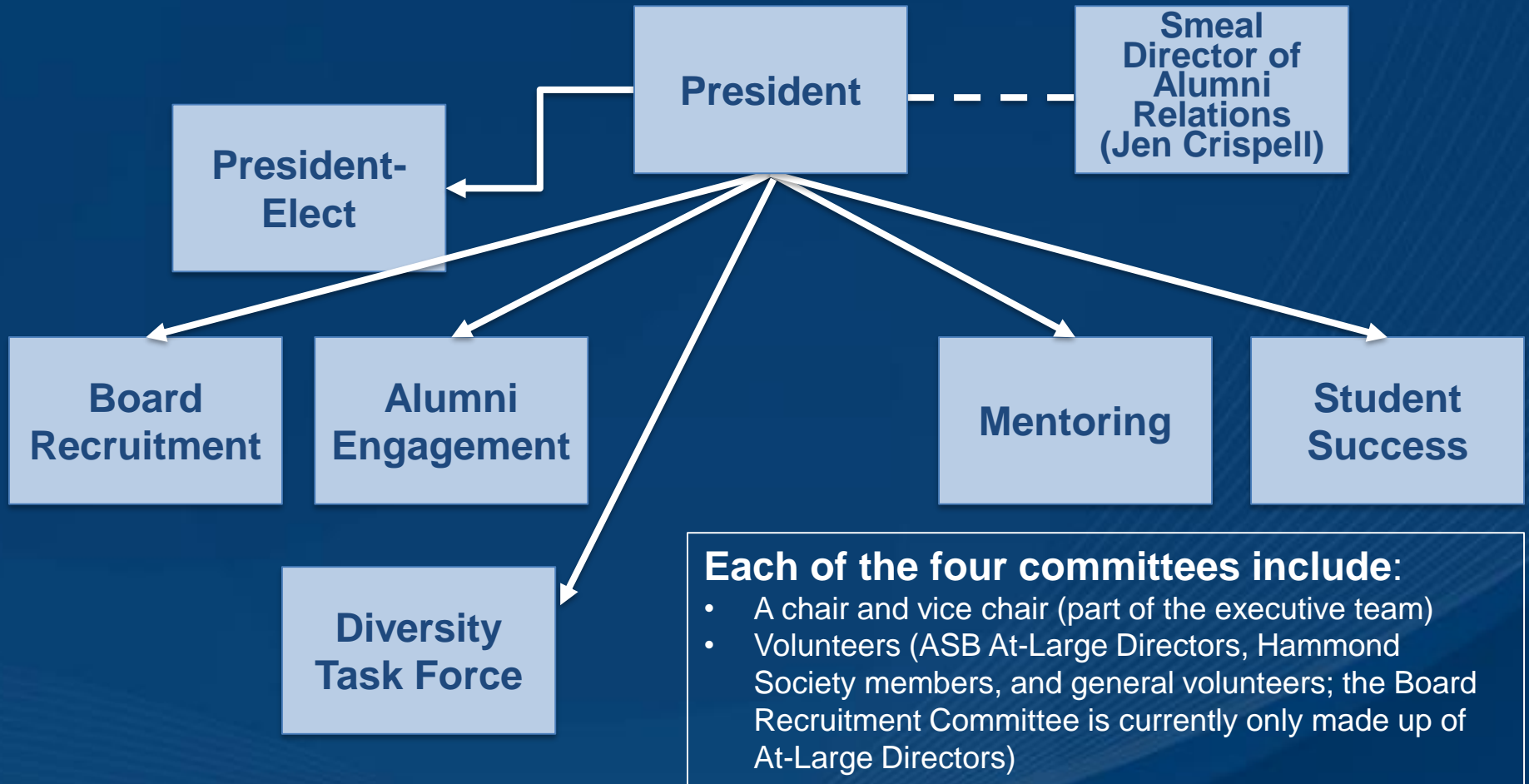


# Alumni Society Board (ASB)

- Up to 24 At-Large Directors that serve two, three-year terms
- Four committees and one task force; each Committee chair and vice chair serves on the executive committee, along with the president, president-elect, and several ex-officio directors
- Semi-annual ASB meetings on campus prior to Impact Smeal Day (ISD); for the time being, all alumni events are being held virtually
- After serving the maximum number of terms on the Smeal Alumni Society Board, At-Large Directors are inducted into the Hammond Society
  - The Hammond Society is named in recognition of Dr. J.D. Hammond, Dean Emeritus, for his support and influence developing the Smeal Alumni Society Board



# Organizational Structure



**The Alumni Engagement, Student Success, and Mentoring Committees are open to everyone!**

We encourage you to get involved



# At-Large Director Responsibilities

- Attend the semi-annual board meetings
- Volunteer to support or lead one of the four ASB committees
- Recommend alumni volunteers for At-Large Director positions
- Nominate alumni for the annual awards program
- Maintain membership in the Penn State Alumni Association/Smeal Alumni Society

***Interested in joining the board? Talk to a current member to learn about the requirements and application process!***



# Board Recruitment

- Newly formed Committee in FY 20-21
- This Committee will focus on proactively identifying applicants for future At-Large Director positions, with the intention of considering multiple aspects of diversity and avenues for involvement with Smeal. Examples of projects may include:



**Brian Laubscher**  
*Committee Chair*





# Alumni Engagement

- Builds a pipeline for future ASB At-Large Directors and volunteers
- Improves the Impact Smeal Day experience for new volunteers
- Enhances relationships with Smeal's office of Continuing Education by providing feedback and reviewing materials
- Engages alumni with student organizations after graduation



**Randy Iles**  
*Committee Chair*



**Jeff Vrabel**  
*Committee Vice Chair*



# Mentoring

- Leads Smeal's annual student-alumni mentoring program
- Sets annual goals for driving quality and growth of the program; Yields over 400 mentoring relationships each year
- Manages marketing plan and produces resources to support student and alumni participants
- Facilitates kickoff and mid-year check points to ensure mentoring program success



**Carole McCabe**  
*Committee Chair*



**Matt Giammanco**  
*Committee Vice Chair*



# Student Success

- Facilitates Commonwealth Campus visits to support business students interested in transferring to University Park
- Coordinates the annual Sapphire Leadership Program application review
- Partners with Smeal and current students to better understand how students would like to engage with alumni
- Continues to explore ways to promote diversity throughout Smeal



**Sue Lowe**  
*Committee Chair*



**Marissa Presser**  
*Committee Vice Chair*



# Diversity, Equity, and Inclusion (DEI) Task Force

- Newly formed Task Force in FY 20-21
- This Task Force will focus on creating a more inclusive and diverse environment as it relates to all aspects of our Alumni Society and our Board. Examples of projects may include:
  - Work in tandem with Smeal's Diversity Enhancement Programs (DEP) Alumni Board
  - Work in tandem with the four ASB Committees to help keep a DEI lens on all projects
  - Identify training & learning opportunities for At-Large Directors and volunteers



Kelly-Jean Erwin



Andrew Hazlett



Heather James



Danny Levine



Carole McCabe



Tom Raymond



Michael Snyderman

# Useful Links

- [Apply for an At-Large Director Position](#)
- [ASB Constitution](#)
- [Awards and Honoring Alumni](#)
- [Committee Descriptions](#)
- [Hammond Society](#)
- [Meet the ASB At-Large Directors](#)
- [Mentoring Program](#)
- [Smeal Alumni Career Services](#)
- [Smeal Alumni Relations](#)
- [Ways to Get Involved](#)

Questions? Please contact [Jen Crispell](#)



**PennState**  
Smeal College of Business