

SMEAL
Supply Chain & Information Systems

Department of Supply Chain & Information Systems

Enrollment Facts and Corporate Interaction

Full Time Recruiting Data

Fall 2011 – Spring 2012

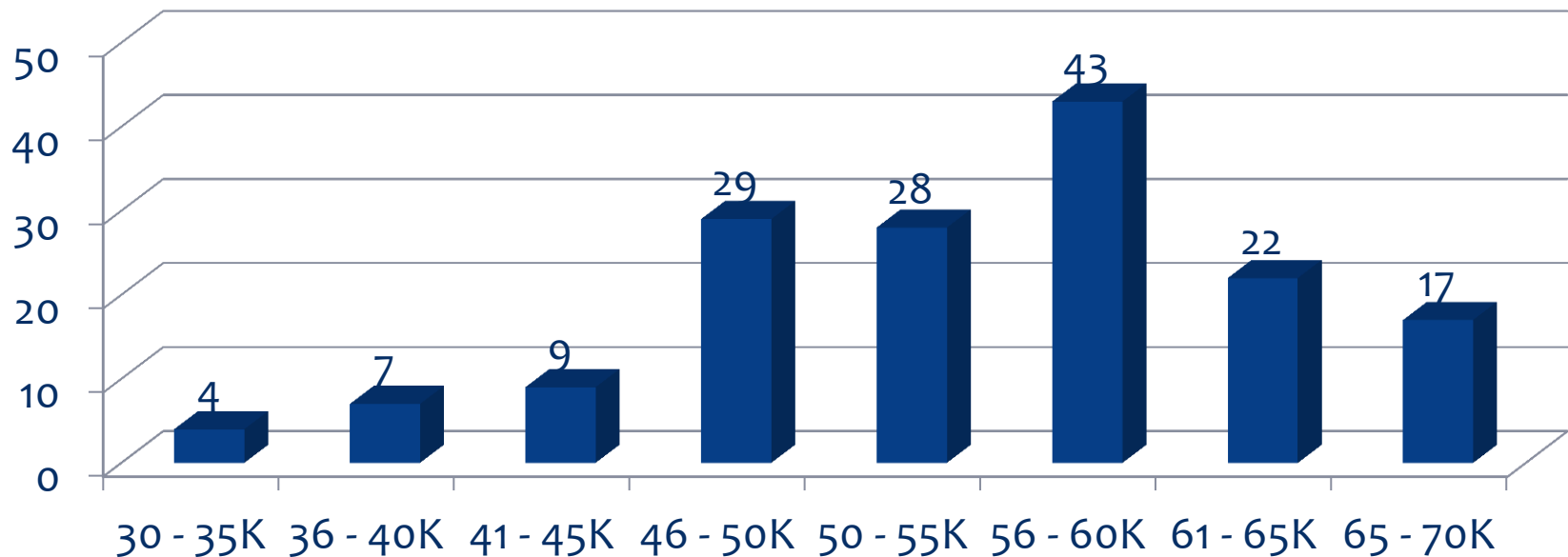
Student Info

- * Total SC&IS Enrollment: **594**
- * Total SC&IS Graduates: **272**
- * Average GPA of SC&IS Students: **3.39**

Recruiting Info

- * Average Starting Salary: **\$55,414**
- * Average Starting Bonus: **\$4,751**
- * **93%** of students with FT jobs at graduation, had an internship or co-op experience

FA11–Sp12 Average Salary Distribution

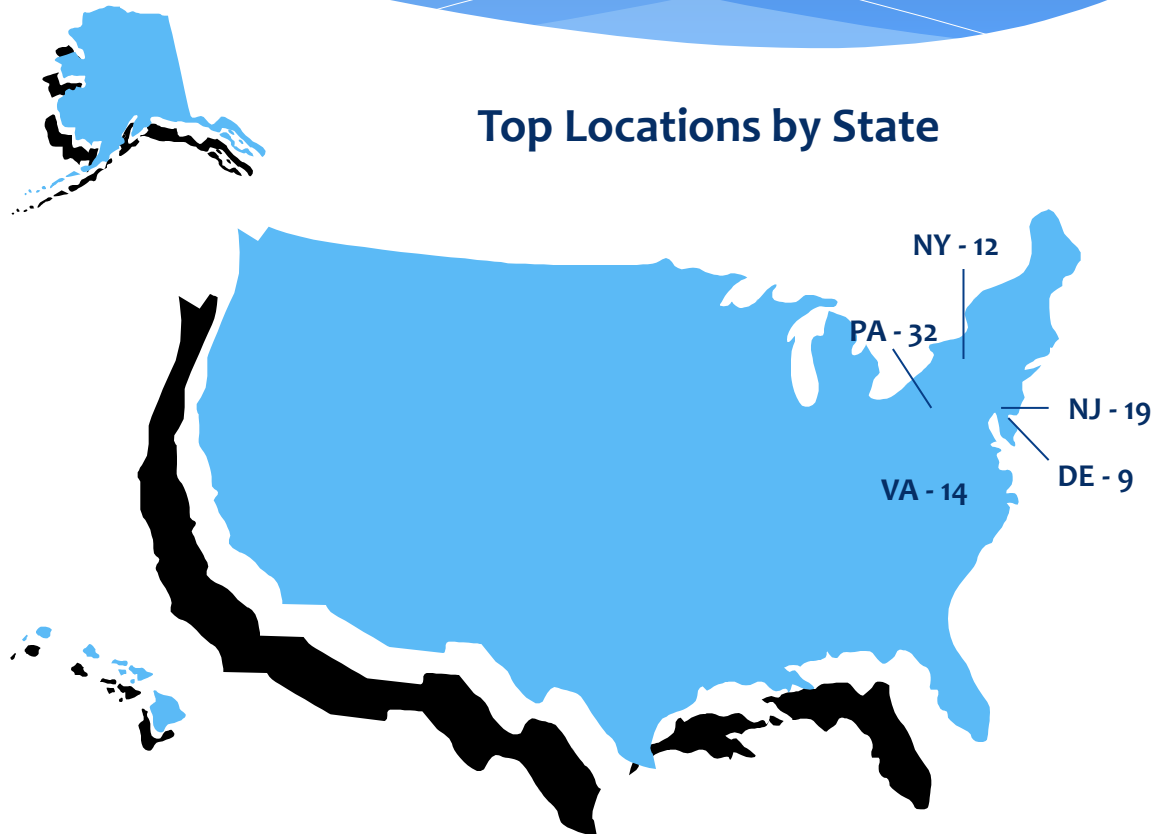


Gathered from full-time base salary data (does not include bonuses)

Beginning in Fall 2011, we updated our methods for tracking data, therefore, we cannot accurately compare this information to previous years.

Placements per State

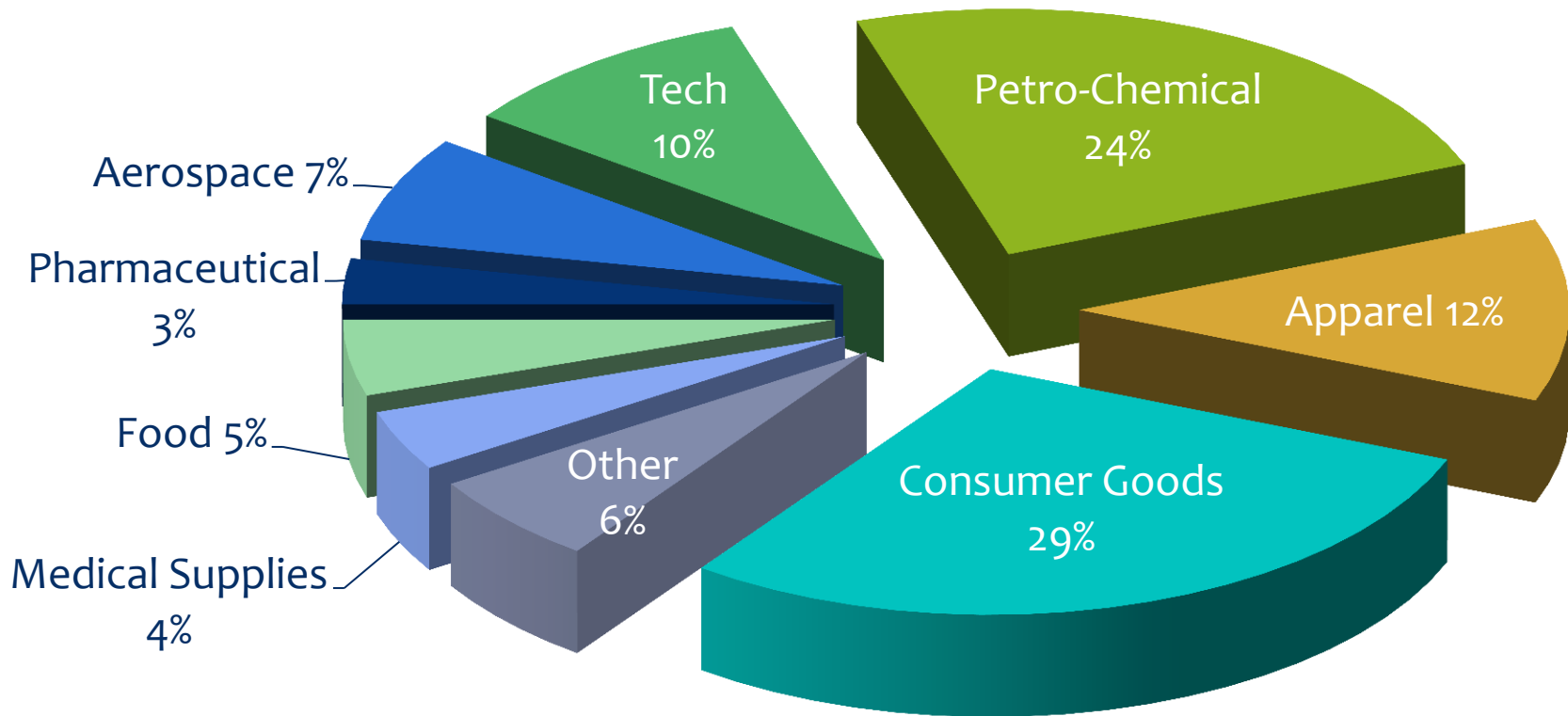
* PA	32	* FL	3
* NJ	19	* MD	3
* VA	14	* KS	2
* NY	12	* AZ	1
* DE	9	* MA	1
* GA	8	* CT	1
* DC	8	* NV	1
* NC	8	* AR	1
* IL	7	* CA	1
* MI	5	* MN	1
* WI	5	* CO	1
* OH	4	* KY	1
* TX	4	* OR	1



20 students did not report their locations and 8 students had international placements

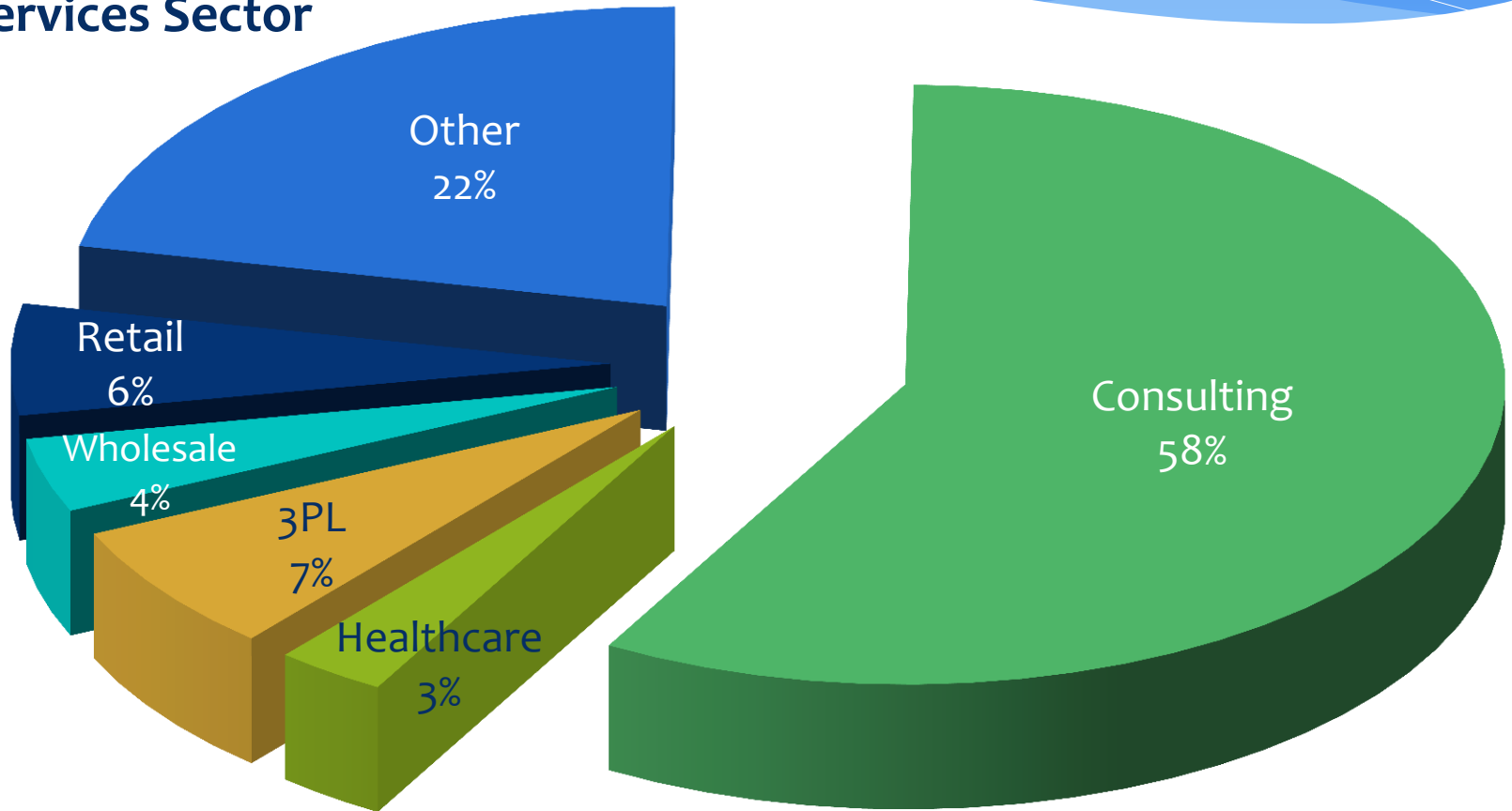
Placement per Industry

Manufacturing Sector



Placement per Industry

Services Sector



Top Companies per Placement

Top Companies

- * IBM
- * DuPont
- * Manhattan Associates
- * Danaher Corporation
- * Toys R Us
- * Amazon
- * Lockheed Martin
- * PricewaterhouseCoopers

